

## Specification sheet LX 1848

### Parapet drainage VARIO upstand spout for bending on site

**Emergency drainage**

**Gravity flow**

**Silent**

**Discharge rate: 0,4 l/sec**

**Water height: 35 mm**

**Roof penetration: 0 mm**

**Diameter: DN 70**

**LX-Number: LX1848**

**Weir height: -**

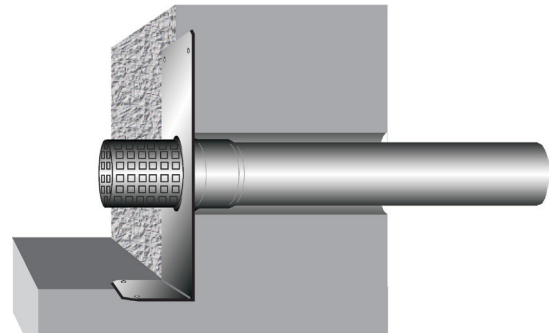
**Drain: ventilated**

**Downpipe: ventilated**

**Downpipe height: -**

**Drainage: on floor**

**Flange form: Bonding flange**

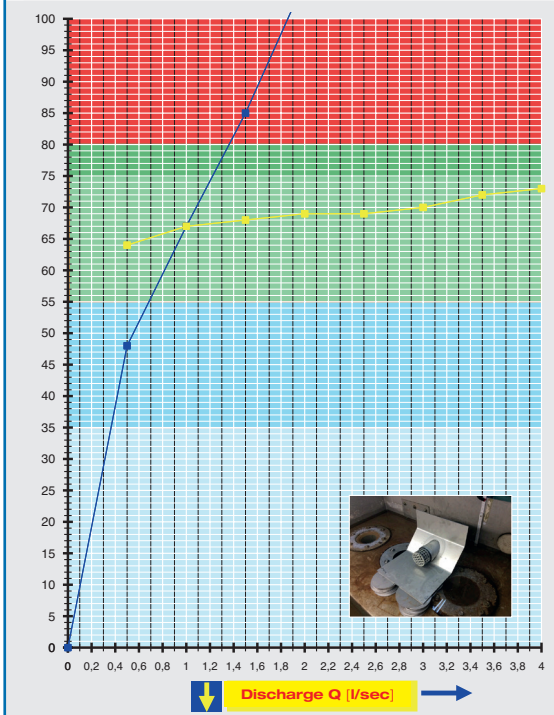


Note:  
In this measurement, the point of origin of the flow graph is equal to the bottom edge of the pipe.

#### LX 1848 Piece list

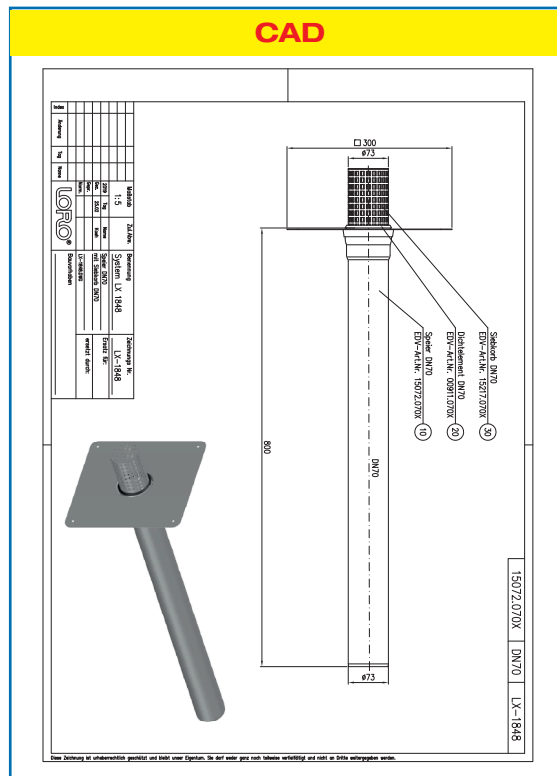
- 1 x Art.-No. 15072.070X, LORO-X VARIO upstand Spout
- 1 x Art.-No. 15217.070X, LORO-X Strainer basket
- 1 x Art.-No. 00911.070X, LORO-X Sealing element
- 1 x Art.-No. 00986.000X, LORO-X Lubricant

#### hQ - Head Discharge curve



**Systempower**

#### CAD



**Systemshape**

<b>Water height</b>	mm	10	15	20	25	30	<b>35</b>	40	45	50	55	60	65	70	75	80	85	90	95
<b>Discharge</b>	l/sec	0,1	0,1	0,2	0,3	0,3	<b>0,4</b>	0,4	0,5	0,6	0,7	0,8	1,0	1,1	1,2	1,4	1,5	1,6	1,7
<b>Silent</b>																			

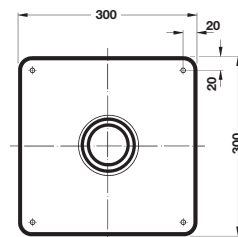
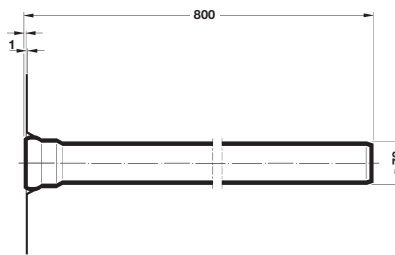
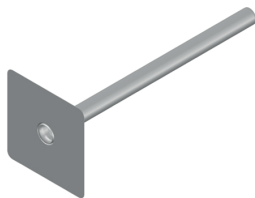
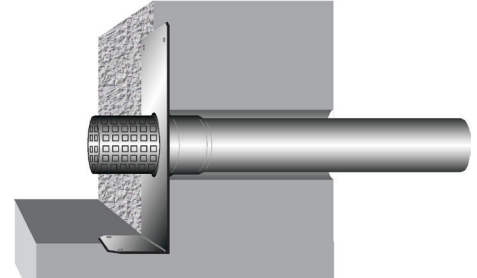
## LORO-X VARIO upstand spout, for bending on site

DN 70

### LX1848-20X

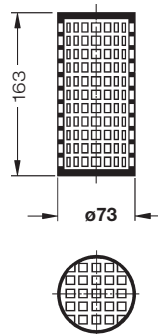
Drain Art.-No. 15072.070X  
Weight: 2,4 kg

**VARIO upstand**  
for bending on site



### LORO-X Strainer basket

Art.-No. 15217.070X



**Heat tracing:** Lorowerk recommends to check all drains and pipes with regard to their frost-sensibility. Where necessary, these parts should be upgraded with heat tracing.